

NEW! GLO-YS精密ロックナットCシリーズ

GLO PRECISION LOCMNUTS FOR BEARINGS (C-TYPE) Patent pending



GLO-YS精密ロックナットCシリーズは高速回転用の主軸(スピンドル)のベアリングを締め付けるためのロックナットです。このCシリーズはバランス調整用の穴があり、主軸への締め付けた後にバランス・振れ等の微調整が可能です。さらに、スクリューインプラグでバランス調整用の穴を塞ぐことにより風切り音を軽減できます。

The super precision Lock Nuts C series can be applied for spindle with high speed and Particularly, The products will be given possibility for adjustment on balancing and run-out after assemble to spindle. And also SAVE a time, SAVE a cost. Finally, can make to reduce the noise and vibration.

YSK-Cシリーズ K Type

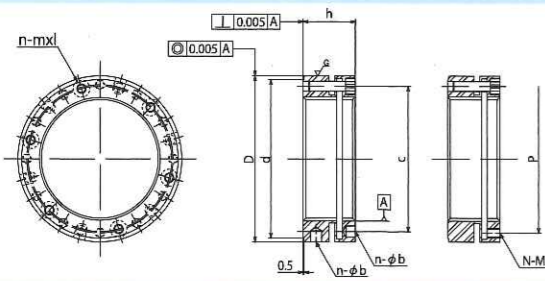
YSK-C ロックナットは、YSKと同じ締付け方式に加え、バランス調整用の穴加工を施した特殊精密ロックナットです。そのバランス調整用の穴は、スクリューインプラグで塞ぐことにより高速回転時の風切り音を軽減できます。回転数8,000rpm以上の高速回転主軸(特に15,000rpm以上)、バランス精度G2.5以下を必要とする主軸への使用に適しています。

- 材質: SCM440 ●ねじ精度: ISO4H ●硬度: HRC28°~32°
- 同心度: 0.005mm ●直角度: 0.005mm
- バランス調整用穴、スクリューインプラグ付き

YSK-C-series

revolution=over 8,000rpm especially over 15,000rpm
apply for spindle apply for less balancing Value = G2.5
can get a tight Lock quality characteristic

- Material Composition: SCM440 ● Thread Precision: ISO 4H
- Hardness: HRC 28° ~ 32° ● Concentricity: 0.005mm
- Run Out: 0.002mm ● With Balance adjustment screw holes, Screw-in plugs



■主要寸法一覧表

品番	価格(円)	D	h	d	n-mxl	b	c	N-M	P	MAX.Nm
GLO YSK-C M40X1.5		58	22	55	4-M4X16	5	49	8XM5	49	3.5
GLO YSK-C M45X1.0		68		63	6-M4X18		57		58	
GLO YSK-C M50X1.0		70		66			60		60.5	
GLO YSK-C M55X2.0		75	25	71	6-M5X20	6	65		65.5	4.5
GLO YSK-C M60X2.0		84	26	79			72		73	
GLO YSK-C M65X2.0		88		84		77		78.5		
GLO YSK-C M70X2.0		95	28	89	7		82		83.5	
GLO YSK-C M75X2.0		100		94			87		88.5	
GLO YSK-C M80X2.0		110		103		95		97		
GLO YSK-C M85X2.0		115		108		100		102.5		
GLO YSK-C M90X2.0		120		113		105	12XM5	107		
GLO YSK-C M95X2.0		125	32	118	8-M6X22		110		112.5	8.0
GLO YSK-C M100X2.0		130		123			115		118	
GLO YSK-C M105X2.0		135		128	8		120		122.5	
GLO YSK-C M110X2.0		140		133			125		127	
GLO YSK-C M115X2.0		145	34	137	6-M6X25		130		132.5	
GLO YSK-C M120X2.0		155		146			136		138	
GLO YSK-C M125X2.0		160		150		140		142.5		
GLO YSK-C M130X2.0		165	36	155		148		149		
GLO YSK-C M135X2.0		170		160		153		154.5		
GLO YSK-C M140X2.0		180		168		160		162.5		
GLO YSK-C M145X2.0		185	38	173	8-M6X25	10	165	16XM5	168.5	
GLO YSK-C M150X2.0		190		178			170		172.5	

YSR-Cシリーズ R Type

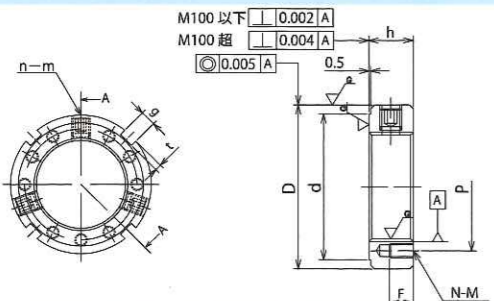
YSR-C ロックナットは、YSRと同じ締付け方式に加え、バランス調整用の穴加工を施した特殊精密ロックナットです。そのバランス調整用の穴は、スクリューインプラグで塞ぐことにより高速回転時の風切り音を軽減できます。回転数8,000rpm以上の高速回転主軸(特に15,000rpm以上)、バランス精度G2.5以下を必要とする主軸への使用に適しています。

- 材質: SCM440 ●ねじ精度: ISO4H ●硬度: HRC28°~32°
- 同心度: 0.005mm ●直角度: 0.002mm
- バランス調整用穴、スクリューインプラグ付き

YSR-C-series

revolution=over 8,000rpm especially over 15,000rpm
apply for spindle
apply for less balancing Value=G2.5
very easy for assembling
quality characteristic

- Material Composition: SCM440 ● Thread Precision: ISO 4H
- Hardness: HRC 28° ~ 32° ● Concentricity: 0.002mm
- Run Out: 0.002mm ● With Balance adjustment screw holes, Screw-in plugs



■主要寸法一覧表

品番	価格(円)	D	h	g	t	d	n-m	N-M	F	P	MAX.Nm
GLO YSR-C M40X1.5		58				52	3-M6	9-M5	8	49	6.0
GLO YSR-C M45X1.5		65	14	6	2.5	59					
GLO YSR-C M50X1.5		70				64			60		
GLO YSR-C M55X2.0		75				68			65		
GLO YSR-C M60X2.0		80	16	7	3	73			70		
GLO YSR-C M65X2.0		85				78		9-M6	75		
GLO YSR-C M70X2.0		92				84			10	81	
GLO YSR-C M75X2.0		98				90				87	
GLO YSR-C M80X2.0		105	18	8	3.5	96		9-M8		93	
GLO YSR-C M85X2.0		110				102				98	
GLO YSR-C M90X2.0		120				108				105	
GLO YSR-C M95X2.0		125	20	10	4	113	3-M8		12	110	
GLO YSR-C M100X2.0		130				118					115
GLO YSR-C M105X2.0		140				125				123	
GLO YSR-C M110X2.0		145	22			132			14	128	
GLO YSR-C M115X2.0		150				137		12-M8		133	
GLO YSR-C M120X2.0		155		12	5	142				16	138
GLO YSR-C M125X2.0		160	24			147				143	
GLO YSR-C M130X2.0		165				152				148	
GLO YSR-C M135X2.0		175				160				155	
GLO YSR-C M140X2.0		180				165	3-M10		18	160	
GLO YSR-C M145X2.0		190	26	14	6	175					168
GLO YSR-C M150X2.0		195				180				173	

新精密ロックナット誕生!

高速回転領域での

最適を追求した

主軸用精密ロックナット

NEW EXCELLENTS ITEMS
C series and SGL series
for high speed machine tool
spindles

GLO-YS

SGL series

C series



GLO
GLOBAL PARTS CORP.

株式会社 **70-パルパ**

〒577-0062
大阪府東大阪市森河内東2丁目6番16号
TEL:06-6618-0802 (代) FAX:06-6618-1222
E-mail: glo-j@glo-j.co.jp URL: <http://glo-j.co.jp>

GLOBAL PARTS CORP.

2-6-16, MORIKAWACHI-HIGASHI
HIGASHI-OSAKA, 577-0062, OSAKA JAPAN
Phone: 06-6618-0802 (代) Fax: 06-6618-1222
E-mail: glo-j@glo-j.co.jp URL: <http://glo-j.co.jp> Feb. 2014

GLOBAL PARTS CORP.



GLO-SGL seriesは、
高速回転用の主軸（スピンドル）
にご使用頂ける全面研削加工タイ
プの精密ロックナットです。
主軸使用において、精密ロックナット
でのバランス微調整機能が生かせな
いポジションにあるロックナットで、全
面研削加工（ネジ・端面・外周）をす
ることによりバランス・同心度・直角度・平行
度等の品質レベルを1ランクアップさせた
新しい精密ロックナットです。是非、現行の
ロックナットと比較して頂き、1ランクアップの
SGL seriesをご検討頂きますようお願い申し
上げます。



SGLシリーズ使用例 Precision Locknut Applications

Contents

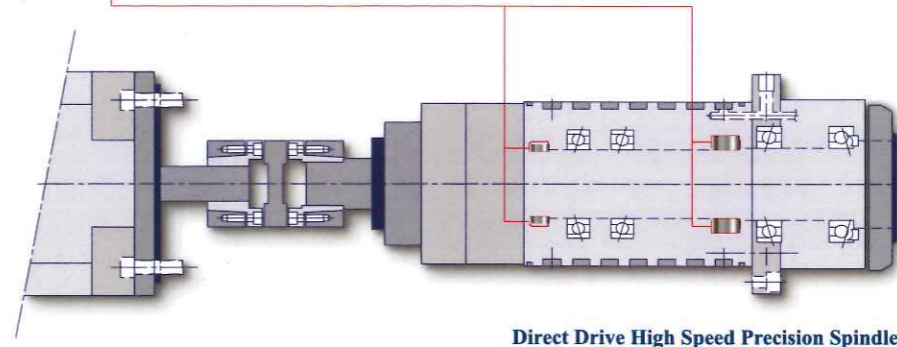
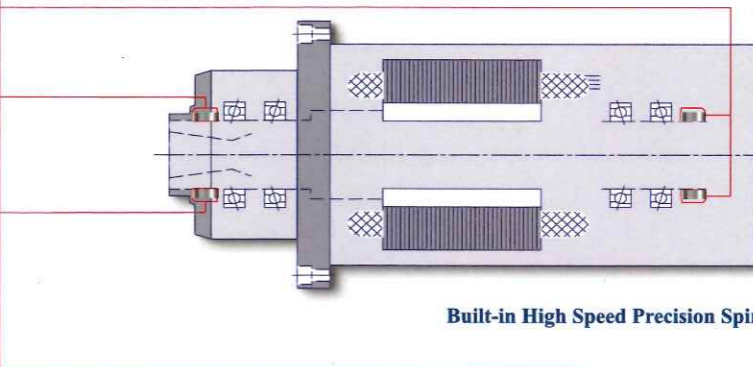
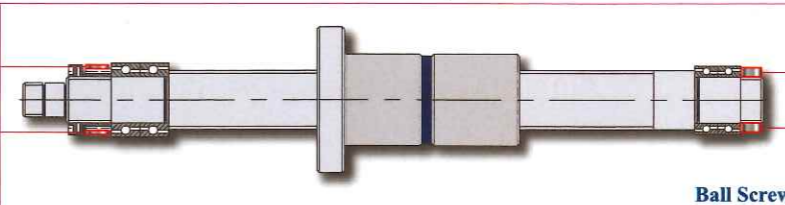
SGL - F 1 - 2

SGL - R 3 - 4

SGL - A 5 - 6

SGL - K 7 - 8

SGL Series
Precision Locknuts



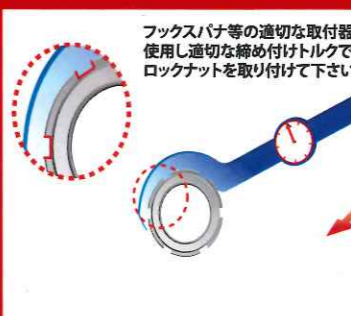
Notes on Installation 取り付け方法



✓ Clean the locknut with naphtha or appropriate industrial degreaser before installation.



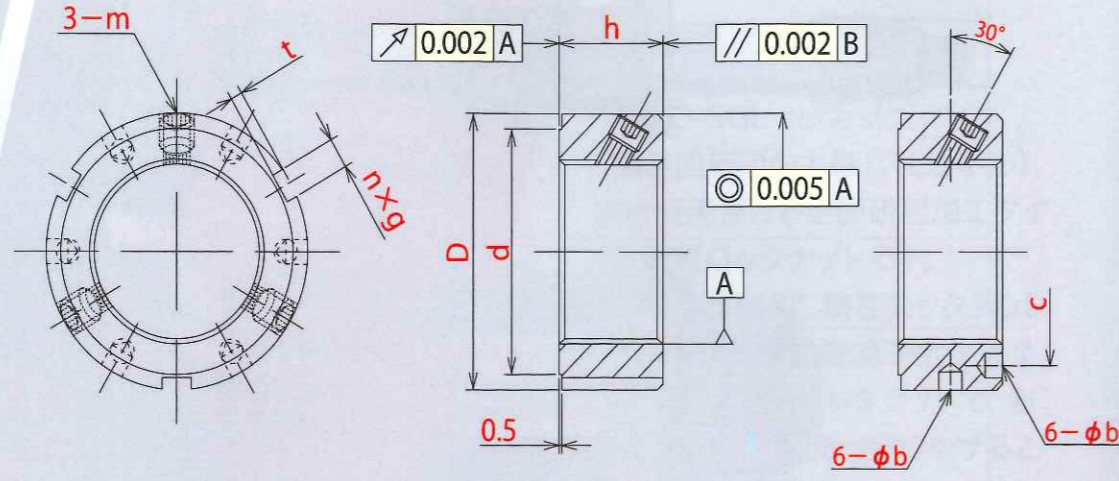
✓ Apply a small drop of lubricant to inner threads.



✓ Use appropriate tools or spanner to set the correct preload.



✗ Avoid applying direct pressure to any single point.



SGL-F Flank Locking

The SGL-F Series locknuts employ 30°, 3 point locking. The outstanding design of the brass threads are perfectly matched and prevent any loosening whatsoever. 30° design locking screws also reduce torque on this product. Clamping rim, trailing rim, and outer skirt are precision ground to conform to high precision requirements during high rpms.

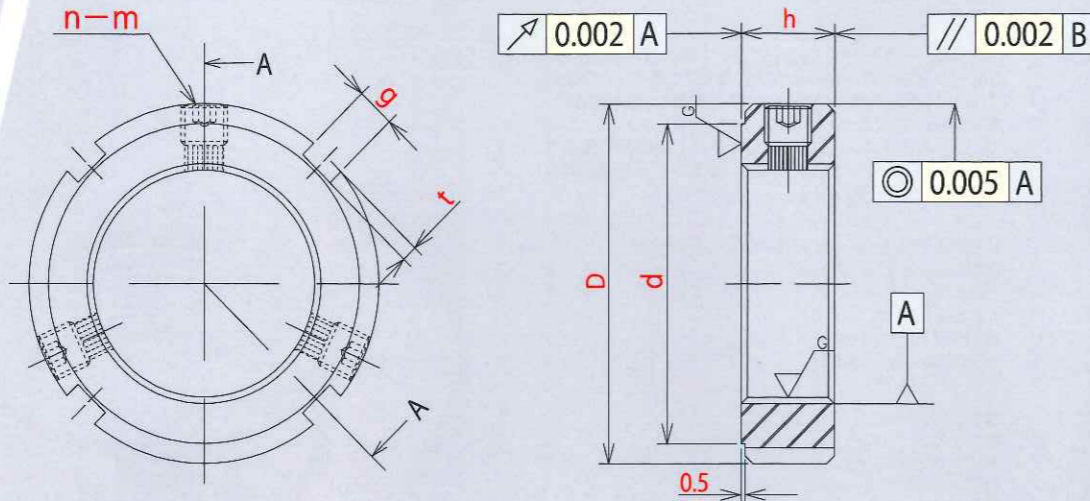
SGL-Fロックナットは、ねじ山に対して斜め方向(30度)の3箇所から軸を締め付ける方式になっています。この優れた締め付け方式は高い緩みトルクを発揮し、緩み防止効果が非常に高くなっています。また、このロックナットはめねじを含めて全面研削加工されています。そのため、高い精度が要求される高速回転用主軸に最適です。

- Material Composition: SCM440(42CrMo4)
- Thread Precision: ISO 4H
- Run Out: 0.002mm
- Hardness: HRC 28° ~ 32°
- Parallelism: 0.002mm
- Concentricity: 0.005mm

- 材質: SCM440(42CrMo4)
- ねじ精度: ISO 4H
- 直角度: 0.002mm
- 硬度: HRC 28°~32°
- 並行度: 0.002mm
- 同心度: 0.005mm



Thread	D	h	d	n x g / b	t / c	m	MAX.Nm	Thread	D	h	d	n x g / b	t / c	m	MAX.Nm		
SGL-F M14 × 1.5	30	14	25	3 x 4 / —	2	—	M5	4.0	SGL-F M68 × 2	92	24	84	3 x 8 / φ6	3.5	81	M8	16.0
SGL-F M15 × 1	30	14	25	3 x 4 / —	2	—	M5	4.0	SGL-F M70 × 2	92	24	84	3 x 8 / φ6	3.5	81	M8	16.0
SGL-F M16 × 1.5	30	14	25	3 x 4 / —	2	—	M5	4.0	SGL-F M72 × 2	94	24	86	3 x 8 / φ6	3.5	83	M8	16.0
SGL-F M17 × 1	32	16	27	3 x 4 / —	2	—	M5	4.0	SGL-F M75 × 2	98	24	90	3 x 8 / φ6	3.5	87	M8	16.0
SGL-F M18 × 1.5	32	16	27	3 x 4 / —	2	—	M5	4.0	SGL-F M76 × 2	98	24	90	3 x 8 / φ6	3.5	87	M8	16.0
SGL-F M20 × 1	38	16	33	3 x 4 / —	2	—	M5	4.0	SGL-F M80 × 2	105	24	96	3 x 8 / φ7	3.5	93	M8	16.0
SGL-F M20 × 1.5	38	16	33	3 x 4 / —	2	—	M6	6.0	SGL-F M85 × 2	110	24	102	6 x 8 / φ7	3.5	98	M8	16.0
SGL-F M22 × 1.5	38	16	33	3 x 4 / —	2	—	M6	6.0	SGL-F M90 × 2	120	26	108	6 x 10 / φ7	4	105	M8	16.0
SGL-F M24 × 1.5	38	18	33	3 x 5 / —	2	—	M6	6.0	SGL-F M95 × 2	125	26	113	6 x 10 / φ7	4	110	M8	16.0
SGL-F M25 × 1.5	38	18	33	3 x 5 / —	2	—	M6	6.0	SGL-F M100 × 2	130	26	118	6 x 10 / φ7	4	115	M8	16.0
SGL-F M27 × 1.5	40	18	35	3 x 5 / —	2	—	M6	6.0	SGL-F M105 × 2	140	28	125	6 x 10 / φ7	4	123	M10	30.0
SGL-F M30 × 1.5	45	18	40	3 x 5 / —	2	—	M6	6.0	SGL-F M110 × 2	145	28	132	6 x 10 / φ7	4	128	M10	30.0
SGL-F M33 × 1.5	50	18	45	3 x 5 / —	2	—	M6	6.0	SGL-F M115 × 2	150	28	137	6 x 10 / φ7	4	133	M10	30.0
SGL-F M35 × 1.5	52	18	47	3 x 5 / —	2	—	M8	16.0	SGL-F M120 × 2	155	30	142	6 x 12 / φ7	5	138	M10	30.0
SGL-F M36 × 1.5	52	18	47	3 x 5 / —	2	—	M8	16.0	SGL-F M125 × 2	160	30	147	6 x 12 / φ7	5	143	M10	30.0
SGL-F M39 × 1.5	58	20	52	3 x 6 / —	2.5	—	M8	16.0	SGL-F M130 × 2	165	30	152	6 x 12 / φ7	5	148	M10	30.0
SGL-F M40 × 1.5	58	20	52	3 x 6 / —	2.5	—	M8	16.0	SGL-F M135 × 2	175	32	160	6 x 12 / φ7	5	155	M10	30.0
SGL-F M42 × 1.5	62	20	56	3 x 6 / —	2.5	—	M8	16.0	SGL-F M140 × 2	180	32	165	6 x 12 / φ7	5	160	M10	30.0
SGL-F M45 × 1.5	65	20	59	3 x 6 / —	2.5	—	M8	16.0	SGL-F M145 × 2	190	32	175	6 x 12 / φ7	5	168	M10	30.0
SGL-F M48 × 1.5	70	20	64	3 x 6 / —	2.5	—	M8	16.0	SGL-F M150 × 2	195	32	180	6 x 12 / φ7	5	173	M10	30.0
SGL-F M50 × 1.5	70	20	64	3 x 6 / —	2.5	—	M8	16.0	SGL-F M155 × 3	200	34	180	6 x 14 / φ8	6	178	M10	30.0
SGL-F M52 × 1.5	73	22	68	3 x 7 / φ6	3	63	M8	16.0	SGL-F M160 × 3	210	34	190	6 x 14 / φ8	6	185	M10	30.0
SGL-F M55 × 2	75	22	68	3 x 7 / φ6	3	65	M8	16.0	SGL-F M165 × 3	210	34	190	6 x 14 / φ8	6	188	M10	30.0
SGL-F M56 × 2	75	22	68	3 x 7 / φ6	3	65	M8	16.0	SGL-F M170 × 3	220	34	200	6 x 14 / φ8	6	195	M10	30.0
SGL-F M60 × 2	80	22	73	3 x 7 / φ6	3	70	M8	16.0	SGL-F M180 × 3	230	36	205	6 x 16 / φ8	7	205	M12	60.0
SGL-F M64 × 2	85	22	78	3 x 7 / φ6	3	75	M8	16.0	SGL-F M190 × 3	240	36	215	6 x 16 / φ8	7	215	M12	60.0
SGL-F M65 × 2	85	22	78	3 x 7 / φ6	3	75	M8	16.0	SGL-F M200 × 3	250	38	225	6 x 16 / φ8	7	225	M12	60.0



The SGL-R Series Locknuts employ 3-way radial locking. Thickness is comparatively thinner than other products. This series is especially applicable for use when locknut space is limited. Aside from where other products are not usable due to space restrictions, locknut threads, clamping rim, trailing rim, and outer skirt are precision ground to conform to high precision requirements during high rpms.

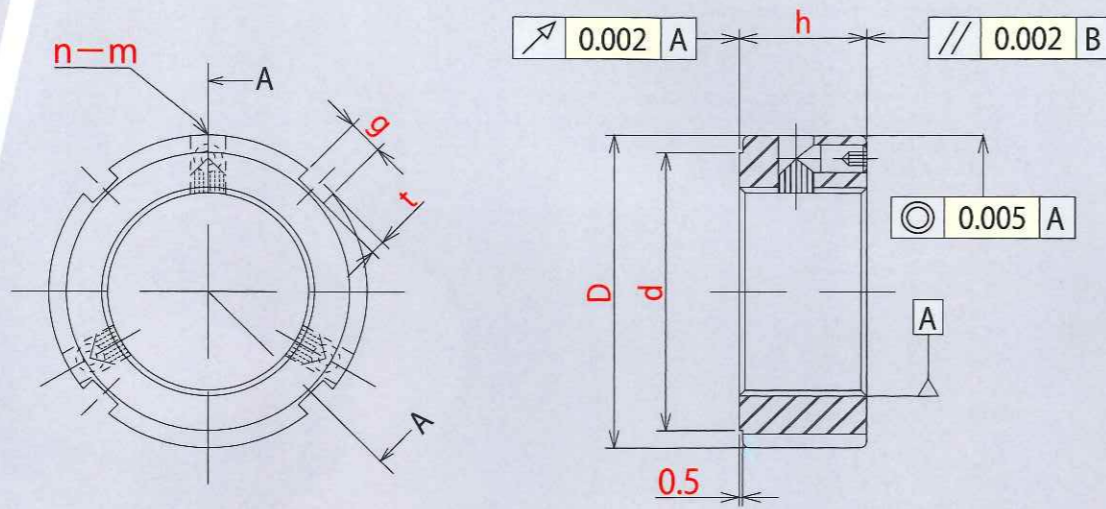
SGL-Rロックナットは、ラジアル方向(半径方向)の3箇所から軸を締め付ける方式になっています。このロックナットの厚み(h)は他のタイプより薄いため狭いスペースで使用することが可能です。また、このロックナットはめねじを含めて全面研削加工されています。そのため、高い精度が要求される高速回転用主軸に最適です。

- Material Composition: SCM440(42CrMo4)
- Thread Precision: ISO 4H
- Run Out: 0.002mm
- Hardness: HRC 28° ~ 32°
- Parallelism: 0.002mm
- Concentricity: 0.005mm

- 材質: SCM440(42CrMo4)
- ねじ精度: ISO 4H
- 直角度: 0.002mm
- 硬度: HRC 28°~32°
- 並行度: 0.002mm
- 同心度: 0.005mm



Thread	D	h	g	t	d	n - m	MAX.Nm	Thread	D	h	g	t	d	n - m	MAX.Nm
SGL-R M6 × 0.5	16	8	3	2	11	2 - M4	3.0	SGL-R M60 × 2	80	16	7	3	73	3 - M8	16.0
SGL-R M8 × 0.75	16	8	3	2	11	2 - M4	3.0	SGL-R M64 × 2	85	16	7	3	78	3 - M8	16.0
SGL-R M10 × 0.75	18	8	3	2	13	2 - M4	3.0	SGL-R M65 × 2	85	16	7	3	78	3 - M8	16.0
SGL-R M10 × 1	18	8	3	2	13	2 - M4	3.0	SGL-R M68 × 2	92	18	8	3.5	84	3 - M8	16.0
SGL-R M12 × 1	20	8	3	2	16	2 - M4	3.0	SGL-R M70 × 2	92	18	8	3.5	84	3 - M8	16.0
SGL-R M12 × 1.25	20	8	3	2	16	2 - M4	3.0	SGL-R M72 × 2	95	18	8	3.5	86	3 - M8	16.0
SGL-R M14 × 1.5	25	8	3	2	21	2 - M4	3.0	SGL-R M75 × 2	98	18	8	3.5	90	3 - M8	16.0
SGL-R M15 × 1	25	8	3	2	21	2 - M4	3.0	SGL-R M76 × 2	100	18	8	3.5	92	3 - M8	16.0
SGL-R M16 × 1.5	28	10	4	2	23	2 - M5	4.0	SGL-R M80 × 2	105	18	8	3.5	96	3 - M8	16.0
SGL-R M17 × 1	28	10	4	2	23	2 - M5	4.0	SGL-R M85 × 2	110	18	8	3.5	102	3 - M8	16.0
SGL-R M18 × 1.5	30	10	4	2	25	2 - M5	4.0	SGL-R M90 × 2	120	20	10	4	108	3 - M8	16.0
SGL-R M20 × 1	32	10	4	2	27	3 - M5	4.0	SGL-R M95 × 2	125	20	10	4	113	3 - M8	16.0
SGL-R M20 × 1.5	32	10	4	2	27	3 - M5	4.0	SGL-R M100 × 2	130	20	10	4	118	3 - M8	16.0
SGL-R M22 × 1.5	35	10	4	2	30	3 - M5	4.0	SGL-R M105 × 2	140	22	12	5	125	3 - M8	16.0
SGL-R M24 × 1.5	38	12	5	2	33	3 - M6	6.0	SGL-R M110 × 2	145	22	12	5	132	3 - M8	16.0
SGL-R M25 × 1.5	38	12	5	2	33	3 - M6	6.0	SGL-R M115 × 2	150	22	12	5	137	3 - M8	16.0
SGL-R M27 × 1.5	42	12	5	2	37	3 - M6	6.0	SGL-R M120 × 2	155	24	12	5	142	3 - M8	16.0
SGL-R M30 × 1.5	45	12	5	2	40	3 - M6	6.0	SGL-R M125 × 2	160	24	12	5	147	3 - M8	16.0
SGL-R M33 × 1.5	52	12	5	2	45	3 - M6	6.0	SGL-R M130 × 2	165	24	12	5	152	3 - M8	16.0
SGL-R M35 × 1.5	52	12	5	2	47	3 - M6	6.0	SGL-R M135 × 2	175	26	14	6	160	3 - M10	30.0
SGL-R M36 × 1.5	55	14	6	2.5	49	3 - M6	6.0	SGL-R M140 × 2	180	26	14	6	165	3 - M10	30.0
SGL-R M39 × 1.5	58	14	6	2.5	52	3 - M6	6.0	SGL-R M145 × 2	190	26	14	6	175	3 - M10	30.0
SGL-R M40 × 1.5	58	14	6	2.5	52	3 - M6	6.0	SGL-R M150 × 2	195	26	14	6	180	3 - M10	30.0
SGL-R M42 × 1.5	62	14	6	2.5	56	3 - M6	6.0	SGL-R M155 × 3	200	28	16	7	180	3 - M10	30.0
SGL-R M45 × 1.5	65	14	6	2.5	59	3 - M6	6.0	SGL-R M160 × 3	210	28	16	7	190	3 - M10	30.0
SGL-R M48 × 1.5	68	14	6	2.5	62	3 - M6	6.0	SGL-R M165 × 3	210	28	16	7	190	3 - M10	30.0
SGL-R M50 × 1.5	70	14	6	2.5	64	3 - M8	16.0	SGL-R M170 × 3	220	28	16	7	200	3 - M10	30.0
SGL-R M52 × 1.5	73	16	7	3	66	3 - M8	16.0	SGL-R M180 × 3	230	30	18	8	205	3 - M12	60.0
SGL-R M55 × 2	75	16	7	3	68	3 - M8	16.0	SGL-R M190 × 3	240	30	18	8	215	3 - M12	60.0
SGL-R M56 × 2	77	16	7	3	70	3 - M8	16.0	SGL-R M200 × 3	250	32	18	8	225	3 - M12	60.0



SGL-A Axial Locking

This locknut employs 3 way axial locking with the same thickness as the SGL-F series. 3 way axial locking is especially applicable to assembly work within special space constraints. Locknut threads, clamping rim, trailing rim, and outer skirt are precision ground to conform to high precision requirements during high rpms.

SGL-Aロックナットは、アキシャル方向(軸方向)の3箇所から軸を締め付ける方式になっており、特殊な組み立て作業が要求される環境に適しています。また、このロックナットはめねじを含めて全面研削加工されています。そのため、高い精度が要求される高速回転に最適です。

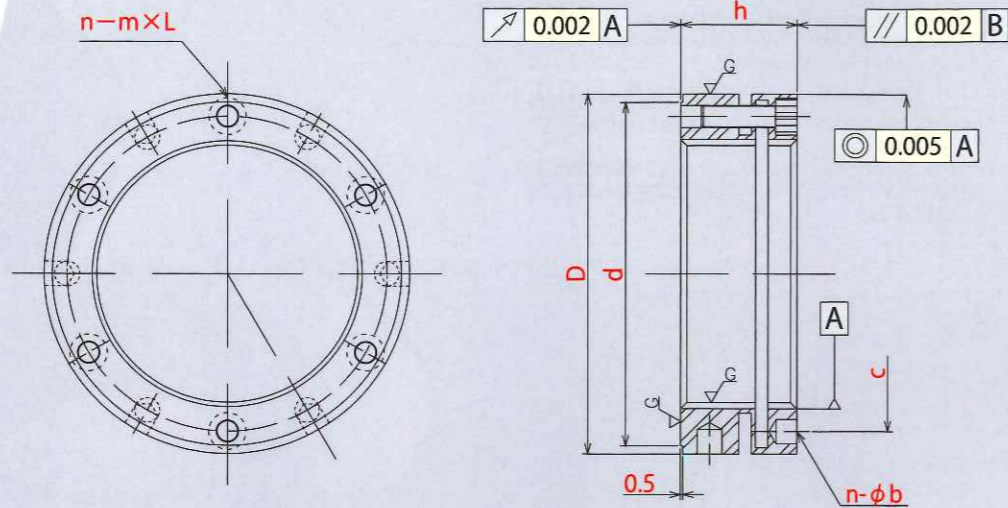
- Material Composition: SCM440(42CrMo4)
- Thread Precision: ISO 4H
- Run Out: 0.002mm
- Hardness: HRC 28° ~ 32°
- Parallelism: 0.002mm
- Concentricity: 0.005mm

- 材質: SCM440(42CrMo4)
- ねじ精度: ISO 4H
- 直角度: 0.002mm
- 硬度: HRC 28°~32°
- 並行度: 0.002mm
- 同心度: 0.005mm



SGL-A

Thread	D	h	g	t	d	n - m	MAX.Nm	Thread	D	h	g	t	d	n - m	MAX.Nm
SGL-A M14 × 1.5	30	14	4	2	25	2 - M4	3.0	SGL-A M68 × 2	92	24	8	3.5	84	3 - M8	16.0
SGL-A M15 × 1	30	14	4	2	25	2 - M4	3.0	SGL-A M70 × 2	92	24	8	3.5	84	3 - M8	16.0
SGL-A M16 × 1.5	30	14	4	2	25	2 - M4	3.0	SGL-A M72 × 2	94	24	8	3.5	86	3 - M8	16.0
SGL-A M17 × 1	32	16	4	2	27	2 - M4	3.0	SGL-A M75 × 2	98	24	8	3.5	90	3 - M8	16.0
SGL-A M18 × 1.5	32	16	4	2	27	3 - M4	3.0	SGL-A M76 × 2	98	24	8	3.5	90	3 - M8	16.0
SGL-A M20 × 1	38	16	4	2	33	3 - M4	3.0	SGL-A M80 × 2	105	24	8	3.5	96	3 - M8	16.0
SGL-A M20 × 1.5	38	16	4	2	33	3 - M4	3.0	SGL-A M85 × 2	110	24	8	3.5	102	3 - M8	16.0
SGL-A M22 × 1.5	38	16	4	2	33	3 - M4	3.0	SGL-A M90 × 2	120	26	10	4	108	3 - M8	16.0
SGL-A M24 × 1.5	38	18	5	2	33	3 - M4	3.0	SGL-A M95 × 2	125	26	10	4	113	3 - M8	16.0
SGL-A M25 × 1.5	38	18	5	2	33	3 - M4	3.0	SGL-A M100 × 2	130	26	10	4	118	3 - M8	16.0
SGL-A M27 × 1.5	40	18	5	2	35	3 - M4	3.0	SGL-A M105 × 2	140	28	12	5	125	3 - M8	16.0
SGL-A M30 × 1.5	45	18	5	2	40	3 - M4	3.0	SGL-A M110 × 2	145	28	12	5	132	3 - M8	16.0
SGL-A M33 × 1.5	50	18	5	2	45	3 - M4	3.0	SGL-A M115 × 2	150	28	12	5	137	3 - M8	16.0
SGL-A M35 × 1.5	52	18	5	2	47	3 - M6	6.0	SGL-A M120 × 2	155	30	12	5	142	3 - M8	16.0
SGL-A M36 × 1.5	52	18	5	2	47	3 - M6	6.0	SGL-A M125 × 2	160	30	12	5	147	3 - M8	16.0
SGL-A M39 × 1.5	58	20	6	2.5	52	3 - M6	6.0	SGL-A M130 × 2	165	30	12	5	152	3 - M8	16.0
SGL-A M40 × 1.5	58	20	6	2.5	52	3 - M6	6.0	SGL-A M135 × 2	175	32	14	6	160	3 - M10	30.0
SGL-A M42 × 1.5	62	20	6	2.5	56	3 - M6	6.0	SGL-A M140 × 2	180	32	14	6	165	3 - M10	30.0
SGL-A M45 × 1.5	65	20	6	2.5	59	3 - M6	6.0	SGL-A M145 × 2	190	32	14	6	175	3 - M10	30.0
SGL-A M48 × 1.5	70	20	6	2.5	64	3 - M6	6.0	SGL-A M150 × 2	195	32	14	6	180	3 - M10	30.0
SGL-A M50 × 1.5	70	20	6	2.5	64	3 - M6	6.0	SGL-A M155 × 3	200	34	16	7	180	3 - M10	30.0
SGL-A M52 × 1.5	73	22	7	3	68	3 - M6	6.0	SGL-A M160 × 3	210	34	16	7	190	3 - M10	30.0
SGL-A M55 × 2	75	22	7	3	68	3 - M6	6.0	SGL-A M165 × 3	210	34	16	7	190	3 - M10	30.0
SGL-A M56 × 2	75	22	7	3	68	3 - M6	6.0	SGL-A M170 × 3	220	34	16	7	200	3 - M10	30.0
SGL-A M60 × 2	80	22	7	3	73	3 - M6	6.0	SGL-A M180 × 3	230	36	18	8	205	3 - M12	60.0
SGL-A M64 × 2	85	22	7	3	78	3 - M6	6.0	SGL-A M190 × 3	240	36	18	8	215	3 - M12	60.0
SGL-A M65 × 2	85	22	7	3	78	3 - M6	6.0	SGL-A M200 × 3	250	38	18	8	225	3 - M12	60.0



SGL-K Clasp Locking

The SGL-K Series locknuts utilize the elasticity of the steel body itself, axial locking, and forced locking. With locking capabilities more than three times higher compared to traditional locknuts, this series is aimed at harsh working conditions where locknuts are easily loosened. Locknut threads, clamping rim, trailing rim, and outer skirt are precision ground to conform to high precision requirements during high rpms.

SGL-Kロックナットは、ロックナット本体の弾性変形を利用し軸を締め付ける方式になっています。この締め付け方式はラジアル方向(半径方向)から締め付ける方式と比べて3倍以上の締結力を発揮します。そのためこのロックナットは、負荷変動が大きく緩みに対して厳しい環境に適しています。また、このロックナットはめねじを含めて全面研削加工されています。そのため、高い精度が要求される高速回転に最適です。

- Material Composition: SCM440(42CrMo4)
- Thread Precision: ISO 4H
- Run Out: 0.002mm
- Hardness: HRC 28° ~ 32°
- Parallelism: 0.002mm
- Concentricity: 0.005mm

- 材質: SCM440(42CrMo4)
- ねじ精度: ISO 4H
- 直角度: 0.002mm
- 硬度: HRC 28°~32°
- 並行度: 0.002mm
- 同心度: 0.005mm



Thread	D	h	d	n - m × L	n	b	c	MAX.Nm	Thread	D	h	d	n - m × L	n	b	c	MAX.Nm
SGL-KM16 × 1.5	34	18	29	4 - M4 × 12	4	4	24.0	3.5	SGL-KM65 × 1.5	88	28	84	6 - M5 × 20	6	6	77.0	4.5
SGL-KM17 × 1	37	18	32	4 - M4 × 12	4	4	26.0	3.5	SGL-KM65 × 2	88	28	84	6 - M5 × 20	6	6	77.0	4.5
SGL-KM18 × 1.5	38	18	33	4 - M4 × 12	4	4	28.0	3.5	SGL-KM68 × 1.5	93	28	87	6 - M5 × 20	6	7	80.0	4.5
SGL-KM20 × 1	40	18	35	4 - M4 × 12	4	4	30.0	3.5	SGL-KM70 × 1.5	95	28	89	6 - M5 × 20	6	7	82.0	4.5
SGL-KM20 × 1.5	40	18	35	4 - M4 × 12	4	4	30.0	3.5	SGL-KM70 × 2	95	28	89	6 - M5 × 20	6	7	82.0	4.5
SGL-KM22 × 1.5	42	18	37	4 - M4 × 12	4	4	32.0	3.5	SGL-KM72 × 1.5	97	28	91	6 - M5 × 20	6	7	84.0	4.5
SGL-KM24 × 1.5	44	18	39	4 - M4 × 12	4	4	34.0	3.5	SGL-KM75 × 1.5	100	28	94	6 - M5 × 20	6	7	87.0	4.5
SGL-KM25 × 1.5	45	20	40	4 - M4 × 14	4	5	35.0	3.5	SGL-KM75 × 2	100	28	94	6 - M5 × 20	6	7	87.0	4.5
SGL-KM26 × 1.5	45	20	40	4 - M4 × 14	4	5	35.0	3.5	SGL-KM80 × 2	110	32	103	6 - M6 × 22	6	8	95.0	8.0
SGL-KM28 × 1.5	46	20	43	4 - M4 × 14	4	5	37.0	3.5	SGL-KM85 × 2	115	32	108	6 - M6 × 22	6	8	100.0	8.0
SGL-KM30 × 1.5	48	20	45	4 - M4 × 14	4	5	39.0	3.5	SGL-KM90 × 2	120	32	113	6 - M6 × 22	6	8	105.0	8.0
SGL-KM32 × 1.5	50	22	47	4 - M4 × 16	4	5	41.0	3.5	SGL-KM95 × 2	125	32	118	6 - M6 × 22	6	8	110.0	8.0
SGL-KM35 × 1.5	53	22	50	4 - M4 × 16	4	5	44.0	3.5	SGL-KM100 × 2	130	32	123	6 - M6 × 22	6	8	115.0	8.0
SGL-KM38 × 1.5	56	22	53	4 - M4 × 16	4	5	47.0	3.5	SGL-KM105 × 2	135	32	128	6 - M6 × 22	6	8	120.0	8.0
SGL-KM40 × 1.5	58	22	55	4 - M4 × 16	4	5	49.0	3.5	SGL-KM110 × 2	140	32	133	6 - M6 × 22	6	8	125.0	8.0
SGL-KM42 × 1.5	60	22	55	4 - M4 × 16	4	5	51.0	3.5	SGL-KM115 × 2	145	34	137	6 - M6 × 22	6	8	130.0	8.0
SGL-KM45 × 1.5	68	22	63	6 - M4 × 18	6	6	57.0	3.5	SGL-KM120 × 2	155	36	146	6 - M6 × 25	6	8	136.0	8.0
SGL-KM48 × 1.5	69	25	65	6 - M4 × 18	6	6	58.0	3.5	SGL-KM125 × 2	160	36	150	6 - M6 × 25	6	8	140.0	8.0
SGL-KM50 × 1.5	70	25	66	6 - M4 × 18	6	6	60.0	3.5	SGL-KM130 × 2	165	36	155	6 - M6 × 25	6	8	148.0	8.0
SGL-KM52 × 1.5	72	25	68	6 - M4 × 18	6	6	62.0	3.5	SGL-KM140 × 2	180	38	168	6 - M6 × 25	8	10	160.0	8.0
SGL-KM55 × 1.5	75	25	71	6 - M4 × 18	6	6	65.0	3.5	SGL-KM150 × 2	190	38	178	6 - M6 × 25	8	10	170.0	8.0
SGL-KM55 × 2	75	25	71	6 - M4 × 18	6	6	65.0	3.5	SGL-KM160 × 3	205	40	190	8 - M8 × 30	8	10	178.0	18.0
SGL-KM58 × 1.5	82	26	77	6 - M5 × 20	6	6	70.0	4.5	SGL-KM170 × 3	215	40	200	8 - M8 × 30	8	10	193.0	18.0
SGL-KM60 × 1.5	84	26	79	6 - M5 × 20	6	6	72.0	4.5	SGL-KM180 × 3	230	40	213	8 - M8 × 30	8	10	205.0	18.0
SGL-KM60 × 2	84	26	79	6 - M5 × 20	6	6	72.0	4.5	SGL-KM190 × 3	240	40	223	8 - M8 × 30	8	10	215.0	18.0
SGL-KM62 × 1.5	86	28	82	6 - M5 × 20	6	6	75.0	4.5	SGL-KM200 × 3	245	40	230	8 - M8 × 30	8	10	223.0	18.0